

# CERTIFICATE OF LOCATION OF GOVERNMENT CORNER

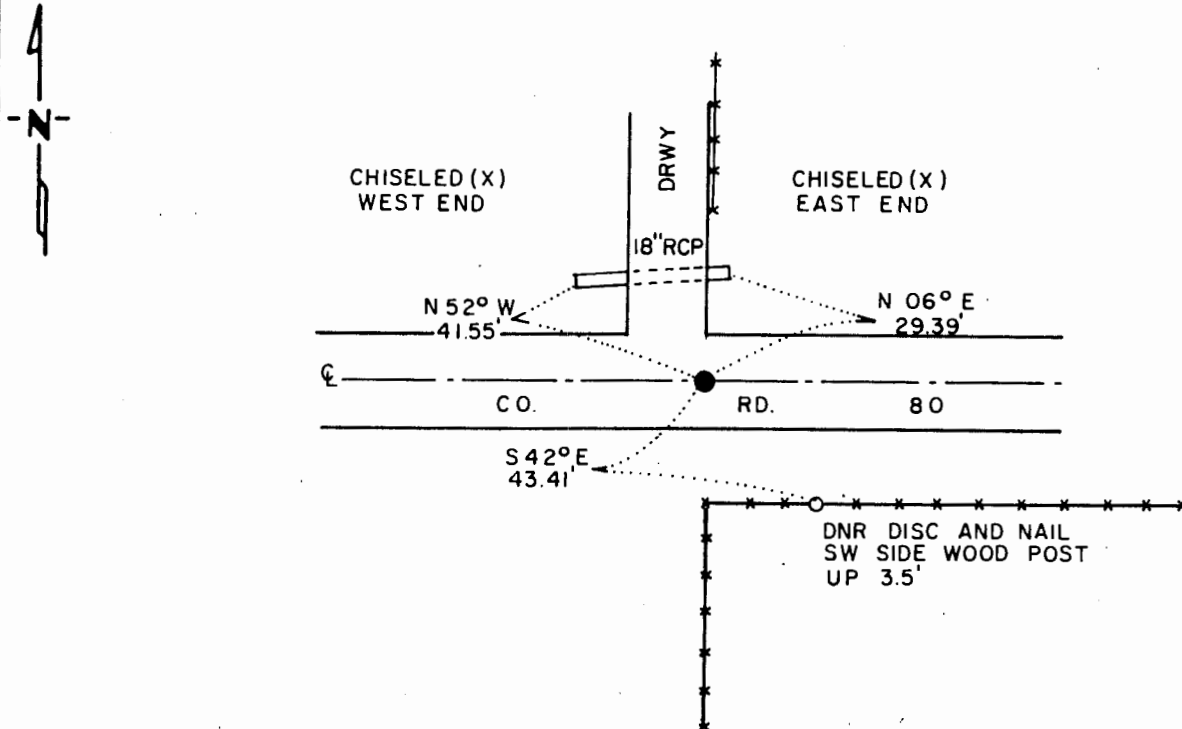
NORTH QUARTER Corner of Section 16, Township 108 N., Range 43 W., 5th P.M.

STATE OF MINNESOTA, County of MURRAY

At the corner location shown on the sketch:

- On 5-14-86 found a 7" x 7" CONCRETE MONUMENT, DOWN 0.3'  
DATE
- left monument as found,  lowered monument,  removed monument (explain)
- On \_\_\_\_\_ placed a \_\_\_\_\_  
DATE

## SKETCH OF REFERENCE TIES



### BEARINGS OBSERVED WITH COMPASS

Statement of evidence relative to this corner location is on back of page.

J.A.G. 6-24-86  
FILE G-383

I hereby certify that this document and the data contained herein was prepared by me or under my direct supervision.

Lawell R. Pomeroy Jr. 8-21-86  
SIGNATURE DATE

Registration No. 17005

- Land Surveyor,  Professional Engineer
- County Surveyor,  County Engineer

### OFFICE OF THE COUNTY RECORDER

County of \_\_\_\_\_

I hereby certify that this document was filed in the Co. Recorders office at \_\_\_\_\_ .M. on the \_\_\_\_\_ day of \_\_\_\_\_ A.D., 19 \_\_\_\_\_

County Recorder \_\_\_\_\_

By \_\_\_\_\_, Deputy

DOCUMENT NO. \_\_\_\_\_

North Quarter Corner Section 16, Township 108 North, Range 43 West

This corner was originally established by the U. S. General Land Office survey in 1866. The government notes show corner marked with a wood post set in mound of earth with pits and trench dug around the mound.

In May 1986, the DNR Bureau of Engineering contacted the Murray County Offices of the Recorder and Highway Engineer for corner information.

The following information was obtained from the County Recorder's Office. Surveyor's Record Book, on page 208, contains a survey by J. W. Woolstencroft, dated November 14, 1907. Survey states this is a previous corner, which measures 2614 ft. from the northeast corner Section 16. No mention is made as to what was found or set at this corner.

Surveyor's Record Book, on page 207, contains a survey of Section 9 by J. W. Woolstencroft, dated November 21, 1908. Survey states all corners were established. Corner measures:

- 2633 ft. from the northeast corner Section 16
- 2633 ft. from the northwest corner Section 16
- 2652 ft. from the center of Section 9

No mention is made as to what was found or set at this corner.

The above information is also contained in the County Highway Engineer's Office.

The following information was obtained from the County Highway Engineer's Office:

Surveyor's Record Book contains a survey of Section 16 by J. W. Woolstencroft, dated November 21, 1908 and June 25, 1925. Survey states all corners were established except the southeast corner. Corner measures:

- 2638 ft. from the northwest corner Section 16
- 2622 ft. from the northeast corner Section 16

No mention is made as to what was found or set at this corner.

Surveyor's Record Book contains ties to government corners in Section 9, by F. A. March, dated 1940. Corner is shown as a concrete stone with ties:

- R. P. tack in corner fence post North 34.0 ft.
- R. P. tack in second fence post S.W. 47.3 ft.

On May 14, 1986, the DNR Bureau of Engineering hired a backhoe operated by Buffalo Ridge Plumbing and Heating of Ruthton to dig for evidence of this corner. Dug a 2-ft. north-south by 8-ft. east-west hole, center being at center line east-west road and fence line north-south. Found a 7" by 7" concrete monument with "X" on top, down 0.3 ft. Left monument as found and set an 8" spike on its east side. Monument measures:

- 2609.30 ft. from the northeast corner Section 16
- 2644.62 ft. from the northwest corner Section 16

on center line east-west road, in line with fences north-south.

Accept the concrete monument as the location of the corner.

Traverse information is available from the DNR Bureau of Engineering.